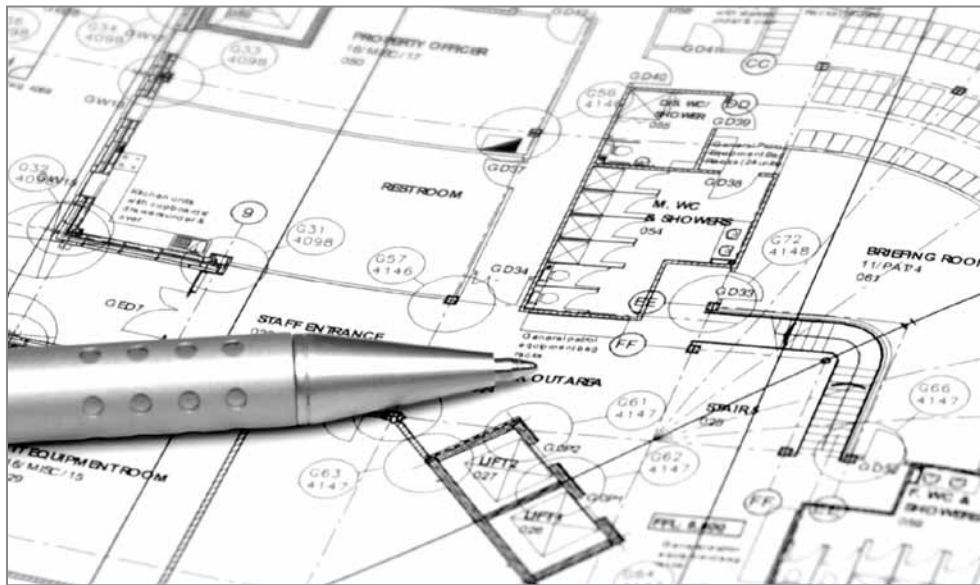


Access to Education

Architectural Ironmongery | Access Control | Door Automation



Complete door and architectural ironmongery scheduling and project management solutions for the education sector.



SENDA (Special Educational Needs and Disability Act 2001) amends Part IV of the Disability Discrimination Act (DDA) to establish legal rights for existing and potential pupils and students with disabilities. Although Part III of the DDA specifically excludes educational services from the provisions relating to goods, facilities and services, it does cover non-educational services carried out from an educational building.

Like the DDA Part III, the duties for education were introduced in stages. Most of the Act was implemented in September 2002; the duty to provide auxiliary aids a year later and the requirement to alter "physical features" came into force in September 2005. The DDA is now forms part of the Equality Act 2010. The effect on the design and construction of educational buildings are similar to that shown for buildings where there are services provided to the general public.

The products and services offered under the Access to Education initiative offer a complete design specification for doorsets and architectural hardware, assisting service providers to meet their obligations under the Equality Act 2010 and the guidance given in BS 8300:2009. This package is offered with comprehensive performance certification to current EN standards.

Regardless of size or location of your project, we can arrange training and installation; implement manufacturers' guarantees and arrange ongoing service contracts for the life of your system through our service partners.

Access to Education

Macnaughton Blair Architectural Division presents a total package solution for architectural ironmongery, automatic and manual door operating devices, access control security devices and signage solutions specifically designed and developed for the education sector.

Access to Education has been launched to offer a comprehensive design, scheduling and project management service to deliver a co-ordinated package of architectural hardware and installation services for your total project requirements.

The products within the Access to Education range have been carefully selected following in-depth research into the "whole life cycle costs" of ironmongery and performance doorsets, and allow us to offer our total package solution with comprehensive product performance warranties.

Our technical consultants will prepare detailed ironmongery schedules for your doorset solutions, co-ordinating the hardware requirements for each individual project, ensuring a coherent package of products.

Products chosen for the Access to Education range have been selected for their durability and high performance standards combined with a high degree of resistance to physical abuse and severe frequency of usage found within an educational environment.

Locking Devices

Classroom function locksets operate quite simply: there is a key lock on the outside, with no ability to lock the door from the inside. Even when the door is locked from the outside, the door can be opened from the inside thus meeting the needs of security whilst satisfying the Fire Officers requirements for egress.

Classroom function locksets were developed around the perceived safety of children, and the inevitable horseplay that all schools experience. In terms of safety, it is important that classrooms never become locked rooms from which there is no exit. As we all know, a door that can be locked from the inside is a prank waiting to happen when a teacher exits the room; however there are solutions to this problem:

Dual function lockset: the dual function lockset requires a key to lock the door from the inside or the outside. When the door is locked from either side, it cannot be opened from the outside, but can always be opened from the inside.

With these operating characteristics, a teacher can quickly "lock down" the room without entering the corridor. Yet, in the case of an emergency, the door is fully operable from the inside of the room. Because the door requires a key to lock the door, students cannot lock the door from the inside as a practical joke and pupils dismissed from a class cannot return to the classroom. The key holder can also change the function of the lock to normal mode, operated by levers, for day-to-day use as required.

Classroom cylinder lockset: The cylinder has a thumbturn which turns in one direction only - to unlock the door. The cylinder is also fitted with a special clutch mechanism. Should someone hold on to the thumbturn in an attempt to prevent access to the room from the inside, the key will override the thumbturn and allow entry, making it ideal for classroom situations.

Our technical consultants can advise on the most suitable locking device for each individual situation.



Access Control

As security is an ever present challenge, sometimes it is vital to control access into individual rooms and in some cases entire buildings, to protect the staff, pupils and equipment. For example, access into a nursery; a hall of residence or a school laboratory. Whatever the reason, our specialist technical consultants will provide a comprehensive access control audit schedule, tailored to your exact requirements to provide you with all the security, convenience and control you need.



Door Controls

Doors in schools are continually in use; classified as heavy to severe usage doors they require a high resistance to physical abuse. Cam-action door closers with a non-projection arm for ease of use and to discourage vandalism and floor springs for heavy usage and wide leaf doors is one solution. Lloyd Worrall can advise on the most appropriate closing device for each project.



We offer full compliance with the opening and closing forces recommended in part M of the building regulations without compromise to the fire integrity (part B) of the doorset. All of our door closing devices meet the current European requirements and EN standards and are offered with full certification and product warranties.



Finger Guard Protection

To protect younger children's fingers from the dangers of closing doors, Access to Education offers a range of finger guard protection, from simple door hinge guards which cover the hinge area to full length protectors to integrated severe duty door hanging with anti-trap finger protection.

Signage Solutions

We can provide a sign scheduling service producing a fully detailed strategy encompassing "wayfinding" methodology and DDA obligations and recommendations as well as mandatory fire and escape route signage.



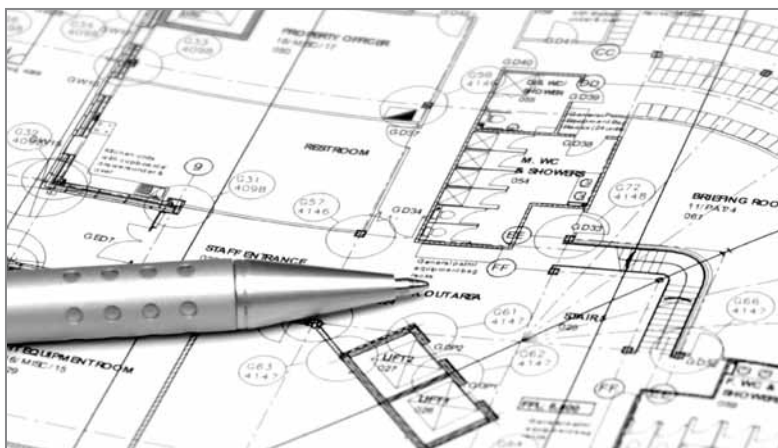


Projects

We are committed to offering unique and tailored packages to the education sector.

Some of our recent projects include:

- The University of Bolton
- Barnsley Grouped Schools PFI
- Grace Academy : Birmingham
- Sharrow School : Sheffield
- Queens University : Belfast
- Sandwell Academy : Birmingham
- University of Ulster : Northern Ireland
- Dublin City University
- Trinity College : Dublin



The Company

Macnaughton Blair Architectural Division consists of Lloyd Worrall, Yannedis and MB Architectural.

Lloyd Worrall is a leading supplier of architectural ironmongery and comprises five regional companies located in Bury St Edmunds, Manchester, Milton Keynes, Newcastle upon Tyne and Sheffield.

Founded in 1911, **Yannedis** is the oldest established architectural ironmonger in Britain. Yannedis has a formidable reputation for producing custom-made ironmongery from detailed historical reproductions to modern patterns.

MB Architectural is the leading supplier of architectural ironmongery, access control and door automation in Northern Ireland.

The specification of architectural ironmongery is at the core of each of our businesses. We offer a full specification, scheduling, quotation, contracts management and delivery service to architects, specifiers and contractors. This includes a specialist access control service of specifying and installing a comprehensive package of access control and door automation solutions.

All products specified adhere to the latest British and European standards as well as meeting the requirements of building regulations and the guidance given in BS 8300.

This brochure focuses on our Access to Education initiative.

Lloyd Worrall
Unit 6, Denbigh Hall
Bletchley
MILTON KEYNES
MK3 7QT
T: 01908 643 364
F: 01908 643 643
E: miltonkeynes@lloydworrall.co.uk

Lloyd Worrall
Unit 13, Chamberlayne Road
Moreton Hall Ind. Est.
BURY ST EDMUNDS
IP32 7EY
T: 01284 762 002
F: 01284 762 003
E: bury@lloydworrall.co.uk

Lloyd Worrall
Units 10-11, Attercliffe Common Ind. Est.
Fell Road
SHEFFIELD
S9 2AL
T: 0114 244 3350
F: 0114 244 4219
E: sheffield@lloydworrall.co.uk

Lloyd Worrall
Unit 1, Bentinck Street Ind. Est.
off Chester Road, Hulme
MANCHESTER
M15 4LN
T: 0161 833 0270
F: 0161 832 3904
E: manchester@lloydworrall.co.uk

Lloyd Worrall
Units 13-16, Noble Street Ind. Est.
off Scotswood Road
NEWCASTLE UPON TYNE
NE4 7PD
T: 0191 226 0888
F: 0191 226 0803
E: newcastle@lloydworrall.co.uk

www.lloydworrall.co.uk

Yannedis
Unit 3, Woodford Trading Estate
Southend Road
Woodford Green
LONDON
IG8 8HF
T: 020 8550 8833
F: 020 8551 0026
E: ask@yannedis.com

www.yannedis.com

MB Architectural
14a Falcon Road
BELFAST
BT12 6RD
T: 028 9038 0200
F: 028 9038 0201
E: ask@mbarchitectural.com

www.mbarchitectural.com